



Brownsover Community School

Newsletter

Message from the Headteacher

Hello parents/ carers,

We are very nearly officially halfway through the academic year and what a magnificent half term we have had as a school. As ever, it has been a busy few weeks, but we would not have it any other way. The children continue to shine brightly in everything they do and it is a real pleasure that they are part of our Brownsover family.

This half term, all classes have focused their learning on History. Year 1 have been exploring the Stone Age including looking at stone age art, weapons and caves. They have been thoroughly immersed as historians. Year 2 children have been exploring the Bronze and Iron Age including looking at roundhouses, what bronze is made of and the Bell beaker people. Year 5 & 6 children have started their unit on World War 2 and the maturity and engagement they have shown when discussing such an important historical event has been truly commendable. I have had the pleasure of visiting and teaching in the classrooms and am always blown away by the learning completed and how children articulate their learning so enthusiastically and accurately. Next half term, Year 1 will be moving on to Dinosaurs (always a favourite!), Year 2 will be exploring Castles and Year 5&6 will finish learning about World War 2. Another exciting half term is ahead of us.

Over the next few weeks and into the new half term, there will be lots of events to be marked

in school starting off with Number Day on Friday 6th February.

Next week is Children's Mental Health week and the theme will be 'This is my place' where children will be encouraged to foster a feeling of belonging whether in our families, schools, peer groups, or wider communities. All classes will complete activities through our PSHE lessons, and we will continue ensuring Brownsover is a safe and happy place for them to be.

We will also be having Safer Internet Day on Tuesday 10th February and the theme is 'Smart tech, safe choices - Exploring the safe and responsible use of AI'. I think now more than ever it is important to ensure children are taught how to explore AI responsibly and keeping themselves safe when using technology.

After half term, we will be celebrating World Book Day and more information will follow.

Good attendance continues to be a priority for us as a school, and I would really like to thank all families for supporting us in this. Our goal is for whole school attendance to be 96% or above by the summer term!

I look forward to the next half term with all children and families. I hope you all have a wonderful half term when the time comes and look forward to Spring weather to bring some more joy. Thank you for your continued support in everything that we do.

Kind regards,
Miss Khan, Head of School



Parking - if you do spot dangerous parking/driving please visit the websites below to find the best route to proceed in making a complaint:

<https://www.warwickshire.police.uk/contact/af/contact-us-beta/contact-us/driving-vehicles-traffic/report-illegal-parking/>

Important Dates - *see our website for our full calendar*

- 12 Feb - FABS Cake Sale
- 13 Feb - Teacher Training Day (School Closed)
- 16 Feb - 20 Feb - Half Term Holiday
- 5 March - World Book Day
- 5 March - 2.45pm Rock up & Read
- 10 March - Reception Height & Weight Survey
- 25 March - Year 6 - Warwickshire Road Safety
- Easter Church Service TBC
- 7 May - Polling Day (School Closed)
- 17 March - Class Photo Day
- 30 March - 10 April - Easter holidays
- 4 May - May Day (School & Bridges Closed)
- 20 May - Rock up & Read
- 7 July - Rock up & Read





Attendance

Every School Day Counts

Our school is continuing to focus on attendance and punctuality are we are writing to remind you that we expect children's attendance to be at 96%.

We currently have a number of children who are well below this attendance percentage and in some cases, it's impacting on their learning.

The tables shows the impact of absence on a child's time in school. We understand that children do get poorly and occasionally will need time off to recover.

Attendance Ladder

How close is your child to 100%?

0 days off school	100%	Perfection
Equates to 2 days off school each year	99%	Excellent
Equates to 5 days off school each year	97%	Good
Equates to 10 days off school each year	95%	Slight Concern
Equates to 20 days off school each year	90%	Concerned
Equates to 30 days off school each year	85%	Very Concerned

It's good to be green!!

Teachers will send children home if they are not well enough to be in school, as we do not want illnesses spreading around a class.

THANK YOU SO MUCH to those families who have been working so hard to ensure children's punctuality and attendance is high or are working to improve their child's attendance.

Every Minute Counts

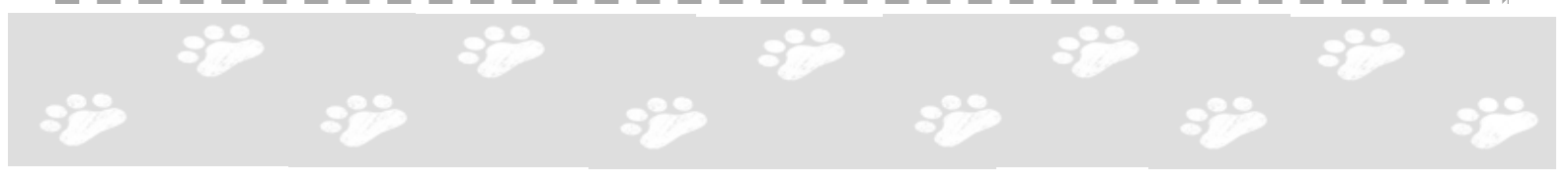
LATENESS = LOST LEARNING

(Figures are calculated over a school year)

- 5 minutes late each day **3** days lost
- 10 minutes late each day **6.5** days lost
- 15 minutes late each day **10** days lost
- 20 minutes late each day **13** days lost
- 25 minutes late each day **19** days lost

Be at the classroom on time and ready to learn!

THANK YOU for getting these important habits established early on in your child's life as it will make a difference to their futures.



Dear Parents/Carers,

Brownsover Community School is committed to providing a welcoming, supportive environment where every child feels they belong and can succeed. Regular attendance is a shared priority, as it plays a vital role in children's wellbeing, learning, and future success.

Attending school consistently helps children feel safe, supported, and connected, while supporting their academic, social, and emotional development. By working closely with families, we aim to ensure all pupils can fully engage with their learning and make the most of every opportunity.

Our whole school attendance is currently **94.1%** and our aim is for Brownsover Community School to be **96% or above**.

Last term, we saw the usual seasonal illnesses across school and whilst this is understandable, we would like to remind all parents/carers that children can attend school with mild symptoms such as a cough or sore throat. We encourage all parents to refer to the NHS guidance 'Is my child too ill for school?' when deciding whether their child should attend school.

Term Time Holidays Request

We have recently had several requests for holidays during term time and we would like to remind parents, that in line with government guidance, **we are not able to authorise absence for family holidays during term time**. Absence from school can not be authorised unless there are exceptional circumstances. It is important to know that unplanned holidays, cost and/or not knowing term dates are not considered an exceptional circumstance for authorising absence. Term dates are available on our school website and Warwickshire County Council's website well in advance.

In line with statutory guidance issued by the Department of Education August 2024, if your child has an unauthorised absence of 5 or more school days, it will trigger a penalty notice. This is based on a national threshold of 10 sessions (5 days) of unauthorised absence in a rolling 10-school-week period, which can span different terms. Parents will be sent a letter notifying them that a penalty notice fine will be issued once a decision has been made regarding a submitted leave of absence request.

Penalty Notices will be issued to each parent of each absent child, (for example 2 children and 2 parents, means each parent will receive 2 invoices – 4 in total).

- First penalty notice: The amount of £160 to be paid within 28 days, this is reduced to £80 each child if paid within 21 days.
- Second penalty notice within a 3-year period (from the date of issue of the first penalty notice): The amount of £160 paid within 28 days. No reduced amount.

(continued...)

To maintain a fair and consistent approach for everyone:

- Please report all absences by 9:30am
- Please state clearly why your child will not be attending, if you say they are 'unwell' we will call to clarify symptoms
- If we have not heard from a parent/carer by 12:00pm, we are required to record the absence as unauthorised.
- Please provide evidence for medical appointments e.g. a letter
- Where possible, please book appointments for out of school hours
- We allow reasonable time for an appointment and would expect the children in before/after their appointment
- A leave of absence form must be completed for any planned absence.

As we start a new term, we look forward to continuing to build upon the partnership between home and school. We thank you for your support in ensuring children attend school regularly and if you have any concerns or queries regarding attendance, please ask to make an appointment to meet with Mrs K Tite or Miss Khan.

Yours sincerely,

Miss Khan

Head of School

Mrs K Tite

Attendance Lead

Job Opportunity - School Cleaner Vacancy

An exciting opportunity has arisen to join our team as a cleaner.

Hours of work: 6am to 8am. - Monday to Friday (2 hours per day) and possible, deep clean cover during the holidays.

Start Date : As soon as possible

For an application form please either pop in, call the school office on: 01788 547660 or e-mail : admin2616@welearn365.com

This School is committed to safeguarding and promoting the welfare of children and young people and expects all staff and volunteers to share this commitment. This post is subject to an Enhanced DBS Disclosure.

We look forward to hearing from you!

Teacher Training Day ~ 13 February 2025



Just a reminder that **School and Bridges** will be **CLOSED** on Teacher Training Day.

School is then closed for Half Term and reopens on the **23rd February**.

Bridges will be open for Holiday Club **only**.

Rock Up & Read Sessions (2.45pm-3.15pm on dates shown)

Come along and join your child for this fantastic reading session.

Each child can have a parent or carer join them to enjoy a book (please note due to classroom/library size and nature of the event we can not accommodate prams/buggies in the classroom - please use a baby carrier/sling or carry your baby in your arms).

Entry via the playground and in through your child's classroom door.

2.45pm-3.15pm - Session dates:

5 March 20 May 7 July

We look forward to seeing you there.



FABS Notices & Events

FABS upcoming events are shown below.

12 February - Valentines Cake Sale Fundraiser

We will be holding our usual end of half term cake sale, any cake (homemade or bought) donations can be handed in at the classroom on the morning of the 12th. Then all these fabulous goodies will be available for purchase at the end of the school day on the playground - so don't forget to bring along a few pennies if you fancy a scrumptious treat.

Don't forget if you can offer help in anyway the FABS team would be delighted to hear from you.

Details of how to get in touch are on the website



FRIDAY 6TH February 2026—National Number Day

Schools across the UK will be celebrating the national day of number on Friday 6th February.

The children a Brownsover will be taking part in a special number related activity during the day, and we would also like to invite children to 'dress up as a digit' too!

This can be anything from wearing a football kit with a digit on the back, to tying hair up in multiple hair bobbles! You can be as creative as you like! We look forward to seeing your clever creations on the 6th!





Parking

We have recently received complaints in the school office regarding the parking outside school.

Please could we ask

- that you are respectful of our neighbours
- do not park over/on their drives
- Leave enough room either side of their drive so that they can safely pull off their drive.

It is a very busy area at peak times but our neighbours do also have work and appointments to get to and often can't afford to be trapped on their own drive.

When the neighbours make contact with us regarding nuisance parking and aggressive behavior we always encourage them to make contact with the police as well.

There is usually plenty more parking available on Campion Way and this helps keep a safer more positive environment outside the school gate.

Thank you for your cooperation.

Metcalf Multisports Afterschool Clubs

Metcalf Multi Sports
After School Clubs
AbbotsFarminfants School

Monday - Years Foundation, 1+2 - Basic Gymnastics Club
Tuesday - Years foundation, 1+2 - Multisports Club
Friday - Years foundation, 1+2 - Football Club

3:15pm to 4:15pm
23rd Feb to 27th Mar

Contact: Ashley Metcalf
Mobile: 07792659978
Email: ashley@metcalfmultisports.co.uk

Scan the QR or follow the link below to sign up metcalf-multisports-limited.classforkids.ie

Allsorts Magazine

Here is the link to the Jan/ March digital version of Allsorts magazine.

https://bit.ly/ALLSORTS-MAG_JANMARCH

- you can **tap** straight to advertisers' websites too when viewing the mag on your phone (please mention allsorts).

There are lots of attraction to visit, services and articles to help your family.


You can view this issue at www.allsortsmag.com too or on the allsorts Facebook page.

Take care - Michelle Love

RUGBY & SURROUNDING VILLAGES
allsorts 16 years
Jan/Mar 26 for parents and children 0-12
IN THIS ISSUE
HALF-TERM FUN
Young Cook - yummy projects
Clubs & Classes for the whole family
Get Crafty
Valentine's Day & Mother's Day
PLUS School Hobbies Boxes & why schools need the support of PTAs & Community Volunteers



Brownsover Community School
Term and Holiday Dates - 2025/2026

M	T	W	T	F	S	S	M	T	W	T	F	S	S	M	T	W	T	F	S	S	M	T	W	T	F	S	S	
August 25							September 2025							October 2025							November 2025							
				1	2	3	1	2	3	4	5	6	7		1	2	3	4	5						1	2		
4	5	6	7	8	9	10	8	9	10	11	12	13	14	6	7	8	9	10	11	12	3	4	5	6	7	8	9	
11	12	13	14	15	16	17	15	16	17	18	19	20	21	13	14	15	16	17	18	19	10	11	12	13	14	15	16	
18	19	20	21	22	23	24	22	23	24	25	26	27	28	20	21	22	23	24	25	26	17	18	19	20	21	22	23	
25	26	27	28	29	30	31	29	30						27	28	29	30	31			24	25	26	27	28	29	30	
M	T	W	T	F	S	S	M	T	W	T	F	S	S	M	T	W	T	F	S	S	M	T	W	T	F	S	S	
December 2025							January 2026							February 2026							March 2026							
1	2	3	4	5	6	7				1	2	3	4						1	2	3	4	5	6	7	8		
8	9	10	11	12	13	14	5	6	7	8	9	10	11	2	3	4	5	6	7	8	9	10	11	12	13	14	15	
15	16	17	18	19	20	21	12	13	14	15	16	17	18	9	10	11	12	13	14	15	16	17	18	19	20	21	22	
22	23	24	25	26	27	28	19	20	21	22	23	24	25	16	17	18	19	20	21	22	23	24	25	26	27	28	29	
29	30	31					26	27	28	29	30	31		23	24	25	26	27	28	30	31							
M	T	W	T	F	S	S	M	T	W	T	F	S	S	M	T	W	T	F	S	S	M	T	W	T	F	S	S	
April 2026							May 2026							June 2026							July 2026							
			1	2	3	4	5					1	2	3	1	2	3	4	5	6	7			1	2	3	4	5
6	7	8	9	10	11	12	4	5	6	7	8	9	10	8	9	10	11	12	13	14	6	7	8	9	10	11	12	
13	14	15	16	17	18	19	11	12	13	14	15	16	17	15	16	17	18	19	20	21	13	14	15	16	17	18	19	
20	21	22	23	24	25	26	18	19	20	21	22	23	24	22	23	24	25	26	27	28	20	21	22	23	24	25	26	
27	28	29	30				25	26	27	28	29	30	31	29	30						27	28	29	30	31			
M	T	W	T	F	S	S	M	T	W	T	F	S	S	Hall Term Days							Terms Days							
August 2026							September 2026							1	40	Autumn Term	75											
3	4	5	6	7	8	9	1	2	3	4	5	6	2	35	Spring Term	55												
10	11	12	13	14	15	16	7	8	9	10	11	12	13	3	30	Summer Term	65											
17	18	19	20	21	22	23	14	15	16	17	18	19	20	4	25	School Holiday												
24	25	26	27	28	29	30	21	22	23	24	25	26	27	5	29	Public Holiday												
31							28	29	30					6	36	Teacher Day 2 mandatory * 32 school set												
														Total	195			County Induction Day										
																		Polling Day School Closure tbc										

Please note: Boughton Leigh Junior School may on occasion book different Teacher Training Days

The 2025/2026 calendar is available at <https://www.warwickshire.gov.uk/education-learning/school-term-dates-induction-days-training-days-holidays>

Events Calendar

Subscribe to the school calendar at our website and all our diary dates can be linked into your personal calendar.

<https://www.brownsovercommunityschool.co.uk/diary>

It will show all our trip dates and any events we have going on in school.

Newsletter dates are on the calendar but can also be found listed in the parent information board.

Attendance Ladder		
How close is your child to 100%?		
0 days off school	100%	Perfection
Equates to 2 days off school each year	99%	Excellent
Equates to 5 days off school each year	97%	Good
Equates to 10 days off school each year	95%	Slight Concern
Equates to 20 days off school each year	90%	Concerned
Equates to 30 days off school each year	85%	Very Concerned

It's good to be green!!

Attendance Matters



School

Tel: 01788 547660

Email: admin2616@welearn365.com

Web: www.brownsovercommunityschool.co.uk

Facebook: Brownsover Community School

Twitter: Brownsover Comm Sch@browncommsch

Bridges

Tel: 01788 547639

Email: bridges2616@welearn365.com

Family Information Service

www.warwickshire.gov.uk/fis

FABS and BCS
Valentines Cake Sale
Fundraiser

12th Feb
After
school



No nuts

All cash
donations
welcome

cookies, cakes, donuts,
cupcakes, brownies & more

Please drop all donations - either baked or faked
to a volunteer or classroom in the morning.



BROWNSOVER COMMUNITY SCHOOL
COFFEE SESSION

12TH FEBRUARY 2026

1:30PM TO 2:30PM

BROWNSOVER
COMMUNITY
SCHOOL
WEBB DRIVE
CV23 0UP

THIS SESSION IS LED BY THE
FAMILY AND RELATIONSHIP
SUPPORT TEAM. IN
PARTNERSHIP WITH EARLY
SUPPORT AND THE FAMILY
INFORMATION SERVICE.

Come along to our coffee session to
find out how our offer can help you:

- Find out what workshops we offer.
- Your opportunity to have your parenting questions answered.
- Learn about our Early Support offer.
 - Learn about the Family Information Service.
- Support with finances, DLA and childcare.
- Opportunity to talk to other parents.



For further information please email
ehparenttrainers@warwickshire.gov.uk



COME JOIN
THE FUN!

BRIDGES HOLIDAY CLUB
Meeting the needs of children



Family environment

Bridges Holiday Club is located within
BrownsOver Community School
Webb Drive
Rugby
CV23 0UP
The club is open to children from the age of 3
years old during school holiday periods.
We are open from 8am-6pm.
Our club ensures that the children are
entertained with a wide range of exciting
activities to keep the children challenged and
engaged. These activities include:

INDOOR SPORTS! BALLOON TENNIS DANCE
PARACHUTE GAMES! COMPUTER GAMES SEWING
TV TABLETOP GAMES ARTS & CRAFT
OUTDOOR PLAY & GAMES
COOKING CONSTRUCTION GARDENING
ROLE PLAY

Holiday Club Operates from
9am-3pm
and the charge is
£27.00 per day

Additional Before & After Care
can be added at the addition-
al charge below:

8am-9am £4.50
3pm - 4pm £4.50
3pm-5pm £9.00
3pm-6pm £13.50

Holiday Forms are available for each
holiday well in advance and can be
obtained via our website:



www.brownsOvercommunityschool.co.uk
(under the Bridges section—forms) or by
calling into the Bridges office



SPRING TERM VIRTUAL WORKSHOPS &
PROGRAMMES

Workshop/ Programme	Date and Time	Venue
Working It Out 4 week programme	12th January 9:30 - 11:00	virtual
Sleep	14th January 9:30 - 11:30	virtual
Solihull Approach 10 week programme	16th January 09:30 - 11:30	virtual
Parenting Together	19th January 17:30 - 19:30	virtual
Parenting Together	6th February 12:30 - 14:30	virtual
Sleep and Routines	17th February 10:00 - 12:00	Virtual
Understanding Children's Behaviour	18th February 09:30 - 11:30	Virtual
Understanding Your Teenager	19th February 13:30 - 15:30	Virtual



**Book your
free place**

For Warwickshire
parents only.

For further information about this
programme please email
ehparenttrainers@warwickshire.gov.uk



Useful Contact Information



Family Information Service
Providing information, advice and one-to-one support for families with children & young people aged 0-25.
New Free Tel: 0800 408 1558
Tel: 01926 742274
Email: fis@warwickshire.gov.uk
www.warwickshire.gov.uk/fis

Warwickshire's Child and Family Well-being Service
Tel 0300 247 0072
or email:
wcfw.contact@hrcrgcraegroup.com

Warwickshire Health Visiting Well Baby drop in Clinic
Tuesdays: 9:30am - 11:00am
at Claremont Children and family Centre
Self-weigh drop in
9:30am - 12:00pm
Mondays at Claremont
Friday's at Boughton Leigh

Breastfeeding Support Drop-in Group for Babies and Toddlers
Wednesdays: 10:00am-11:30am
at Claremont Children & Family Centre

ROSA Drop in Clinic for those impacted by sexual violence
Contact Claremont Children & Family Centre for more details.
Tel: 01788579488

Warwickshire Family Connect
For concerns about a child's wellbeing
Tel: 01926 414144

Early Support Drop ins at the CFCs
Long Lawford Tues - 2.00-4.00pm
Claremont Weds - 2.15-4.15pm
Boughton Leigh 9.30-11.30am
Family Support Help Line
Monday to Friday: 9.00am to 4.00pm
Tel: 01926 412412
www.warwickshire.gov.uk/childrenandfamilies

Midwives
Maternity advice,
The Owen Building, St. Cross Hospital
Tel: 01788 663184

Adult and Community Learning
<https://warwickshire.gov.uk/acl>
Tel: 01926 736392

Speech and Language Therapy Preschool Team
Tel: 01788 555107

HCRG Sexual Health & Contraception Drop-in
4th Monday of the month at Claremont CFC 1.45-3.45pm
4th Monday of the month at Boughton Leigh CFC 9.30-11.30am

Interested in volunteering?
please contact
serena.langan@barnardos.org.uk

WHAT'S ON GUIDE

Rugby Children & Family Centres

February Half Term

Rugby Children & Family Centres (CFC)

Boughton Leigh Children & Family Centre
Wetherell Way, Rugby,
CV21 1LT Tel: 01788 570347

Claremont Children & Family Centre
Claremont Road, Rugby,
CV21 3LU Tel: 01788 579488

Long Lawford Children & Family Centre
Holbrook Road, Long Lawford,
Rugby, CV23 9AL Tel: 01788 561313
Email: rugbycfc@barnardos.org.uk
Website

<https://coventryandwarwickshire.barnardos.org.uk/children-and-family-centres/rugby/>



Rugby Borough Children and Family Centres (CFC)

16th -20th February 2026



Monday

Walk-in Wardrobe
Pre-loved clothes for 0-5's
9.30am to 11.30am
Toy Library
9.30am to 11.30am
Claremont CFC

Baby Time
Non-walkers from birth
10.00-11.00 am
Claremont CFC

Baby Self-Weigh Drop in
9.30am-12pm
Claremont CFC.

Baby Time
Non-walkers from birth
1:30pm-2:30pm
Long Lawford CFC

Tuesday

Family Time
Aimed at 0-8yrs
10.00am to 11.30am
Boughton Leigh CFC

Baby Time
Non-walkers from birth
10.00am to 11.00am
The Barn @ Houlton
(CV23 1AL)

Family Time
Aimed at 0-8yrs
1.30-3pm
Long Lawford CFC

Baby Time
Non-walkers from birth
1:30pm-2:30pm
Boughton Leigh CFC

Wednesday

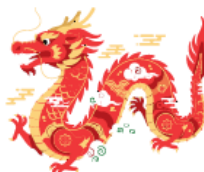
Little Stars
For children with additional needs
10.00am to 11.00am
Claremont CFC

Baby & Toddler Time
Aimed at 0-4yrs
1.30-2.30pm
Cawston
Community Hall
(CV22 7GU)



Thursday

Family Time
Aimed at 0-8yrs
10.00-11.30 am
Claremont CFC



To view all our sessions
scan the QR code or follow
the link:
<https://rugbycfc.eventbrite.com>



Friday

Baby Self-Weigh Drop in
9.30am-12pm
Boughton Leigh CFC.

All centres open
8.30am-4.30pm
for any enquiries

Saturday

Saturdays
Next Saturdays
sessions
14th February
14th March
10-11.30am
Claremont CFC

Please note the changes in times to some of the groups from our regular term time timetable

RUGBY
Art Gallery
& Museum

Half-term Holiday Fun

14 - 21 February 2026



Get ready to tinker and build as you...
Create Learn Enjoy Discover
in our holiday workshops!
Find out more at www.ragm.co.uk/holidayfun

50% OFF INITIAL PAYMENT

TAKE THE PLUNGE INTO WEEKLY LESSONS

Give your child the gift
of confidence and safety
in and around the water
with Better Swim School.



Join weekly lessons with Better
Swim School and get 50% off
your first payment with code
SCHOOL50.

Better Swim School

Terms and conditions apply. Offer open to new customers only for school children aged between 4-12 years. Offer ends on 07/08/2026. Full terms at better.org.uk/offer-terms. Better is a registered trademark and trading name of GLL (Greenwich Leisure Limited), a charitable social enterprise and registered society under the Co-operative & Community Benefit & Societies Act 2014 registration no. 27793R. Registered office: Middlegate House, The Royal Arsenal, London, SE18 6SX. Inland Revenue Charity no. XR43398.

BETTER



February Holiday Course

Abbots Farm Community
Infant School

16th February - 20th February - 9:00am - 3:00pm

**£22
A Day**

Fun, Safe Learning
Environment For
Primary School
Aged Children

Half Price
For Siblings
When Booking
Full Week

FOOTBALL • BASKETBALL • TI RUGBY
DODGEBALL • CRICKET • ARROWS ARCHERY • STREET DANCE • GYMNASTICS • AND
MUCH MORE

WWW.METCALFMULTISPORTS.CO.UK



We offer football and multisports along with street dance and other activities,
letting the children choose which activities they want to take part in.

A range of Sports and Activities

Medals, Prizes and Presentations

Full week booking = £110
Single day bookings = £22 per day

Siblings go half price when
booking a Full week
eg: Child 1 £100+ Child 2 £50 = £150

WE ARE

- Qualified sports coaches
- First aid trained and DBS enhanced

WHAT TO BRING

- Public liability insured £10 million
- Suitable clothing
- Indoor & Outdoor shoes
- Packed lunch, snacks & a drink (no nuts)

BENEFITS

- Improves sporting abilities
- Develops social skills
- Keeps children active & engaged

Abbots Way, Rugby CV21 4AP

Booking Form

[Click here or scan QR code](#)

metcalf-multisports-limited.class4kids.co.uk/camps



Contact
Ashley Metcalf, 07792659978
Email: ashley@metcalfmultisports.co.uk

Twitter: @metmultisports
Facebook: facebook.com/metcalfmultisports

WWW.METCALFMULTISPORTS.CO.UK

WEEKEND PERFORMING ARTS CLASSES.

AGES 4-18



PQA RUGBY

Rugby College, CV21 1AR

**PAULINE
QUIRKE
ACADEMY**
OF PERFORMING ARTS

BE YOURSELF BE AMAZING.

TRY A FULL SESSION FOR FREE!

BE READY FOR ACTION

From musical theatre, to comedy, drama and filmmaking - PQA's project-based approach encourages learning by doing. In our classes, young people get hands on, creating their own content and learning industry skills, while having a blast!

BE YOURSELF BE AMAZING

At PQA, we build self-belief by encouraging young people to step out of their comfort zones, develop new skills, and be their amazing selves, in a supportive environment. Through experiencing all that the performing arts has to offer, young people can grow in grounded, confident adults.

WHAT TO EXPECT

Classes for ages 6-18 are 3 hours long, with industry-expert teachers leading sessions in musical theatre, film and TV, comedy, and drama. Sessions for 4-6 are 90 minutes long. Best of all, we offer everyone a free session!

PQA RUGBY

Rugby College, CV21 1AR

BOOK YOUR FREE SESSION



pqaacademy.com